

BOSE[®]

COMPANION[®] 2 series II

MULTIMEDIA SPEAKERS

Quick Setup Guide and Safety Information

Guía rápida de instalación y información de seguridad

Notice de montage et informations relatives à la sécurité

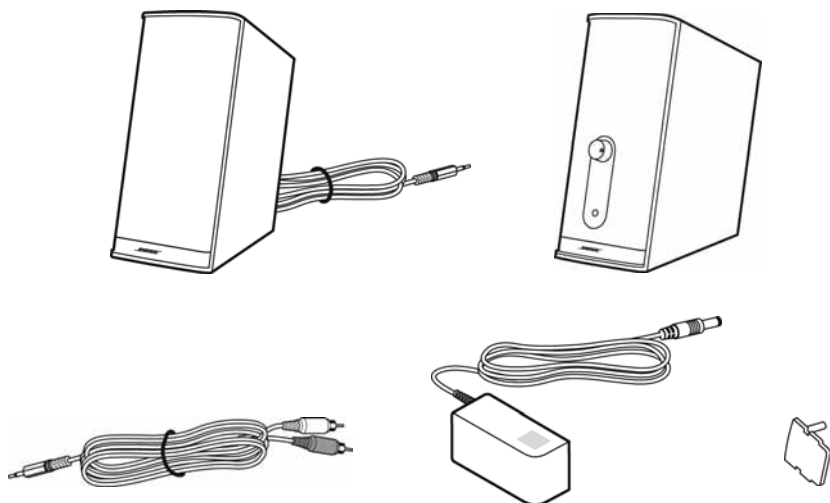


For additional usage and troubleshooting information, refer to the complete Companion[®] 2 Owner's Guide at www.Bose.com/guides

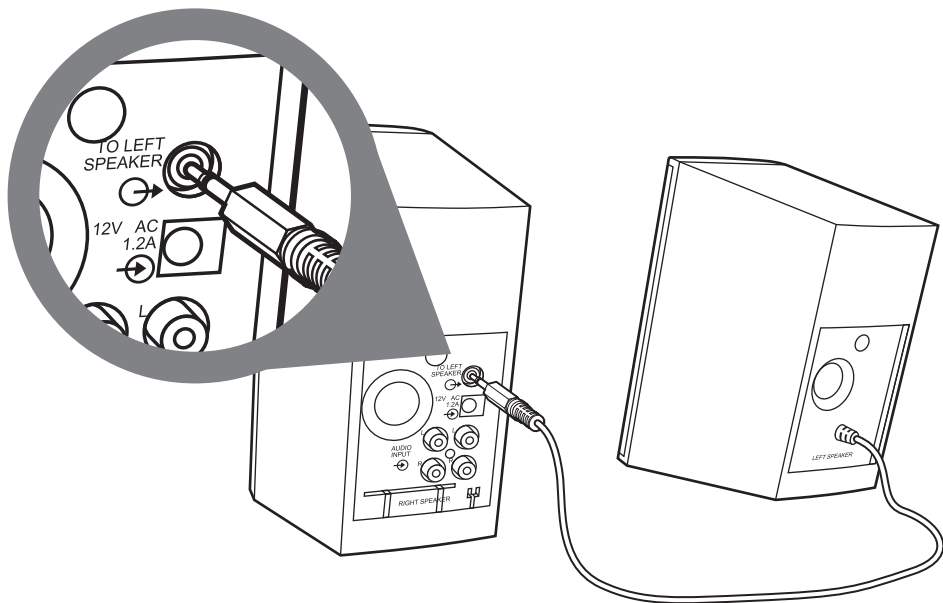
Para la información adicional del uso y del resolución de problemas, consulte guía del usuario completa en www.Bose.com/guides

Pour l'information additionnelle d'utilisation et de dépannage, consultez au complète notice d'utilisation est disponible à l'adresse www.Bose.com/guides

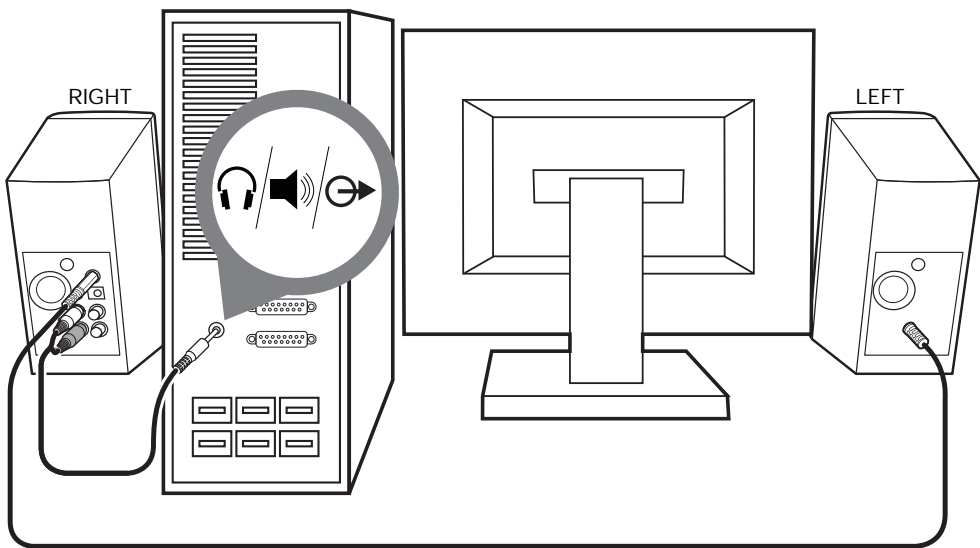
Carton contents Contenido de la caja Contenu du carton



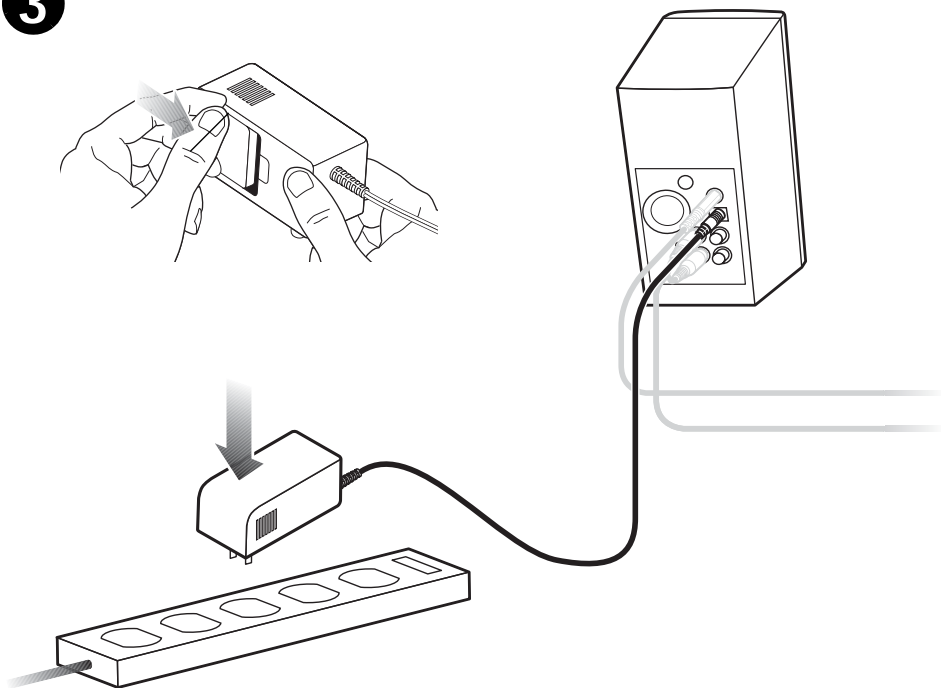
1



2



3



SAFETY INFORMATION

Please read this owner's guide

Please take the time to follow the instructions in this owner's guide carefully. It will help you set up and operate your system properly and enjoy all of its advanced features. Please save this owner's guide for future reference.

WARNINGS:

- To reduce the risk of fire or electrical shock, do not expose the product to rain or moisture.
- No naked flame sources, such as lighted candles, should be placed on or near the apparatus.
- To prevent electric shock, match the wide blade of the line cord plug into the wide slot of the AC (mains) receptacle. Insert fully.
- To avoid danger of suffocation, keep the plastic bags that wrap these speakers out of the reach of children.
- Long-term exposure to loud music may cause hearing damage. It is best to avoid extreme volume levels when using headphones, especially for extended periods.
- The apparatus shall not be exposed to dripping or splashing, and objects filled with liquids, such as vases, shall not be placed on or near the apparatus. As with any electronic product, use care not to spill liquids into any part of the system. Liquids can cause a failure and/or a fire hazard.



The lightning flash with arrowhead symbol within an equilateral triangle alerts the user to the presence of uninsulated dangerous voltage within the system enclosure that may be of sufficient magnitude to constitute a risk of electrical shock.



The exclamation point within an equilateral triangle, as marked on the system, is intended to alert the user to the presence of important operating and maintenance instructions in this owner's guide.



This product conforms to all EU Directive requirements as applicable by law. The complete Declaration of Conformity can be found at www.Bose.com/compliance.

CAUTIONS:

- Use only the power supply provided with the speakers.
- Do not allow liquids to spill or objects to drop into any openings.

NOTES:

- The product label is located on the bottom of the product.
- These speakers must be used indoors. They are neither designed nor tested for use outdoors, in recreational vehicles, or on boats.
- Where the mains plug or appliance coupler is used as the disconnect device, such disconnect device shall remain readily operable.

CONTACTING CUSTOMER SERVICE

For additional help in solving problems, contact Bose® Customer Service. Refer to the address sheet included in the carton.

Additional Information

For additional usage and troubleshooting information, refer to the complete COMPANION® 2 Owner's Guide at www.Bose.com/guides.

FOR YOUR RECORDS

Serial numbers are located on the bottom of the RIGHT Companion® 2 Series II speaker.

Serial number: _____

Dealer name: _____

Dealer phone: _____

Purchase date: _____

1. **Read these instructions** – for all components before using this product.
2. **Keep these instructions** – for future reference.
3. **Heed all warnings** – on the product and in the owner's guide.
4. **Follow all instructions.**
5. **Do not use this apparatus near water or moisture** – Do not use this product near a bathtub, washbowl, kitchen sink, laundry tub, in a wet basement, near a swimming pool, or anywhere else that water or moisture are present.
6. **Clean only with a dry cloth** – and as directed by Bose Corporation. Unplug this product from the wall outlet before cleaning.
7. **Do not block any ventilation openings. Install in accordance with the manufacturer's instructions** – To ensure reliable operation of the product and to protect it from overheating, put the product in a position and location that will not interfere with its proper ventilation. For example, do not place the product on a bed, sofa, or similar surface that may block the ventilation openings. Do not put it in a built-in system, such as a bookcase or a cabinet that may keep air from flowing through its ventilation openings.
8. **Do not install near any heat sources**, such as radiators, heat registers, stoves, or other apparatus (including amplifiers) that produce heat.
9. **Do not defeat the safety purpose of the polarized or grounding-type plug.** A polarized plug has two blades with one wider than the other. A grounding-type plug has two blades and a third grounding prong. The wider blade or third prong are provided for your safety. If the provided plug does not fit in your outlet, consult an electrician for replacement of the obsolete outlet.
10. **Protect the power cord from being walked on or pinched**, particularly at plugs, convenience receptacles, and the point where they exit from the apparatus.
11. **Only use attachments/accessories specified by the manufacturer.**
12. **Unplug this apparatus during lightning storms or when unused for long periods of time** – to prevent damage to this product.
13. **Refer all servicing to qualified service personnel. Servicing is required when the apparatus has been damaged in any way: such as power supply cord or plug is damaged; liquid has been spilled or objects have fallen into the apparatus; the apparatus has been exposed to rain or moisture, does not operate normally, or has been dropped** – Do not attempt to service this product yourself. Opening or

removing covers may expose you to dangerous voltages or other hazards. Please call Bose to be referred to an authorized service center near you.

14. **To prevent risk of fire or electric shock**, avoid overloading wall outlets, extension cords, or integral convenience receptacles.
15. **Do not let objects or liquids enter the product** – as they may touch dangerous voltage points or short-out parts that could result in a fire or electric shock.
16. **See product enclosure for safety-related markings.**
17. **Use proper power sources** – Plug the product into a proper power source, as described in the operating instructions or as marked on the product.

Information about products that generate electrical noise

If applicable, this equipment has been tested and found to comply with the limits for a Class B digital device, pursuant to Part 15 of the FCC rules. These limits are designed to provide reasonable protection against harmful interference in a residential installation. This equipment generates, uses, and can radiate radio frequency energy and, if not installed and used in accordance with the instructions, may cause harmful interference to radio communications. However, this is no guarantee that interference will not occur in a particular installation. If this equipment does cause harmful interference to radio or television reception, which can be determined by turning the equipment off and on, you are encouraged to try to correct the interference by one or more of the following measures:

- *Reorient or relocate the receiving antenna.*
- *Increase the separation between the equipment and receiver.*
- *Connect the equipment to an outlet on a different circuit than the one to which the receiver is connected.*
- *Consult the dealer or an experienced radio/TV technician for help.*

This product complies with the Canadian ICES-003 Class B specifications

This device complies with Part 15 of the FCC Rules. Operation is subject to the following two conditions:

- (1) this device may not cause harmful interference, and
- (2) this device must accept any interference received, including interference that may cause undesired operation.

LIMITED WARRANTY

Your COMPANION® 2 speakers are covered by a limited transferable warranty. Details of the limited warranty are provided on the product registration card that is included in the carton. Please refer to the card for instructions on how to register. Failure to register will not affect your limited warranty rights.

What you must do to obtain Limited Warranty Service:

Return product, with proof of purchase from an authorized Bose dealer, using the following procedures:

1. Contact the Bose organization in your country/region (visit Global.Bose.com for Bose contact information in your country/region) for specific return and shipping instructions;
2. Label and ship the product, freight prepaid, to the address provided by the Bose organization in your country; and
3. Place any necessary return authorization number prominently on the outside of the carton. Cartons not bearing a return authorization number, where required, will be refused.

TECHNICAL INFORMATION

Driver complement

One magnetically shielded 2.5" (6.4 cm) full-range driver per speaker

Power pack rating

U.S./Canada: 120V \sim 60 Hz 20VA maximum

Europe: 230V \sim 50 Hz 20VA maximum

Australia: 240V \sim 50 Hz 20VA maximum

Japan: 100V \sim 50/60 Hz 20VA maximum

Worldwide: 100-240VAC \sim 50/60 Hz, 600mA

Speaker inputs

Input power: 12V $\overline{\sim}$ 1.2 A or 12V $\overline{=}$ 1.8 A

Input signal: 2.25V \sim maximum input

Dimensions (approximate)

7 $\frac{1}{2}$ " H x 3 $\frac{1}{8}$ " W x 5 $\frac{7}{8}$ " D (top rear to bottom front)
(19 cm x 8 cm x 15 cm)

Weight

RIGHT speaker, unpacked: 2.3 lb (1.1 kg)

LEFT speaker, unpacked: 1.8 lb (.8 kg)