

Individual VCO outputs.

Patches are "normalized", so when you insert a cable, the VCO will stop going to the output.

VCA CV input (+/-5v)

VCA CV level

VCA level

Filter's Cut Off Frequency

Reverb gain level

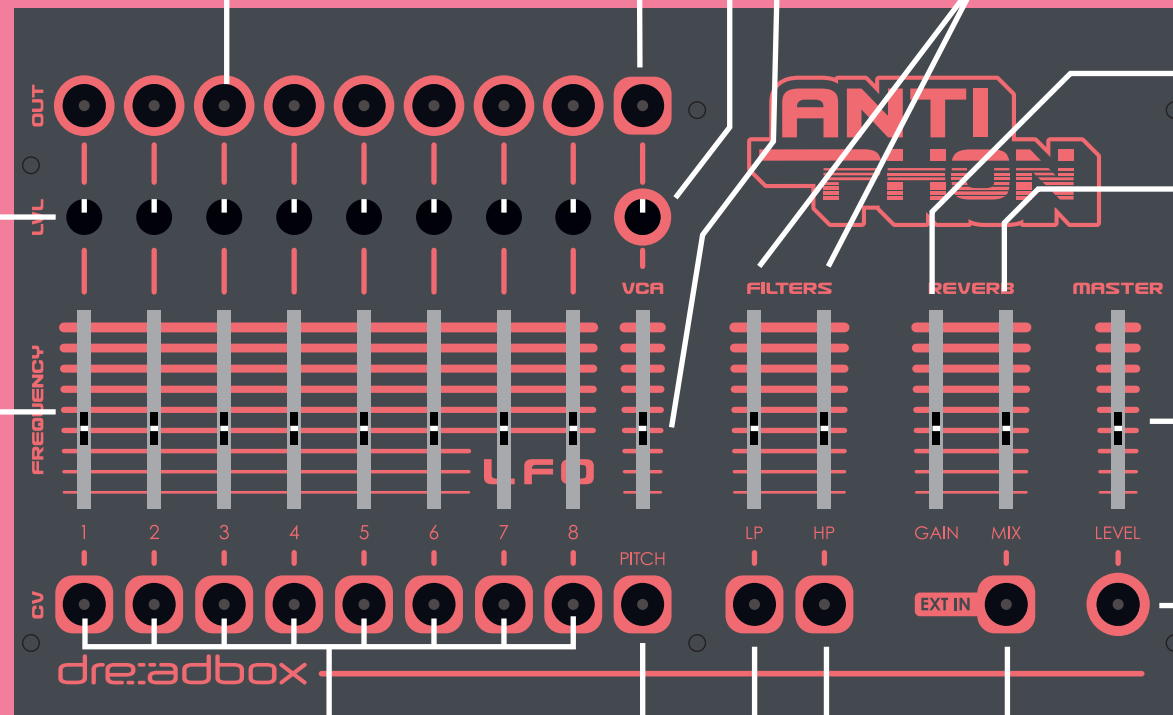
Blend between clean and reverb signal

Master level

Master output

VCO output levels

VCO tuning control



individual VCO pitch control

pitch control for all VCOs

Filter's CV Inputs

External Audio Input

## Notes

- VCO 7 and 8 have a different frequency range, so as these can be used as an LFO.
- External Audio input will also pass from the VCA. You must have the VCA open in order to hear it.
- Pitch control can accept up to +/-12v
- Audio input can accept guitar levels
- Master output can be as high as 20Vpp in some settings!
- The reverb tank must be mounted as far away as possible from any electromagnetic interferences. In simple words, keep it away from power supplies, power cables, monitors etc. Also, avoid having the tank and a monitor on the same desk.