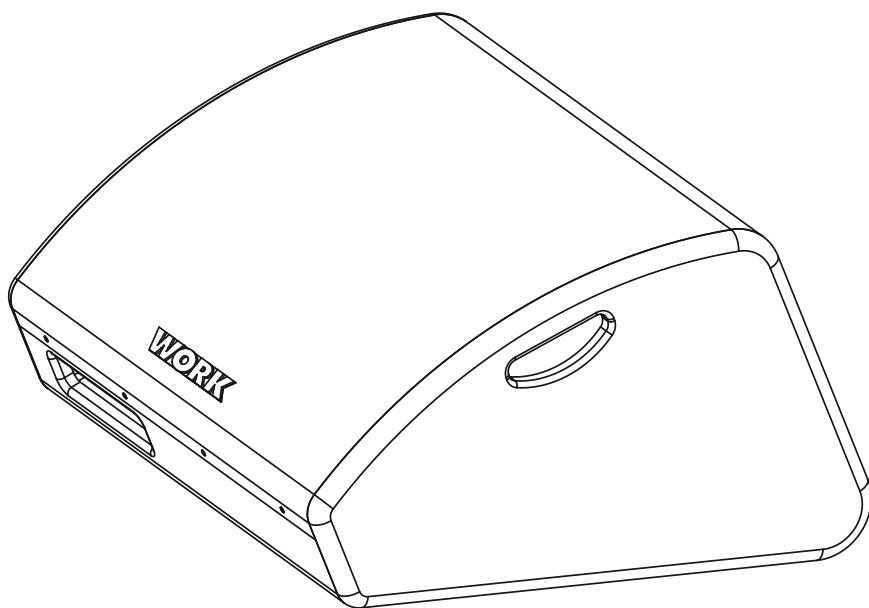


WORK[®] PRO **W**



M 15 CX

User Manual / Instrucciones de Usuario

Rev. 15.11.01

WORK ^{PRO} **M15 CX**

OPERATING INSTRUCTIONS

ADVICES

- In order to protect the drivers, NOT overload them during a long time.
- To reduce the risk of fire, do not expose this unit to source of heat.
- Not put heavy objects over this unit
- Not expose this appliance to rain or moisture.
- Avoid that liquids spill into this unit .
- This unit must be installed by qualified personnel.

M15 CX **COAXIAL STAGE MONITOR**

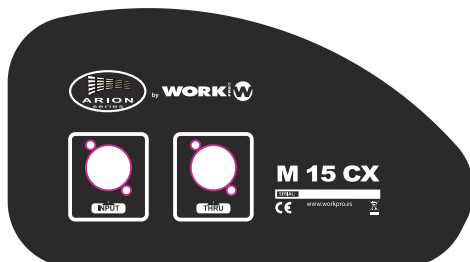
INTRODUCTION

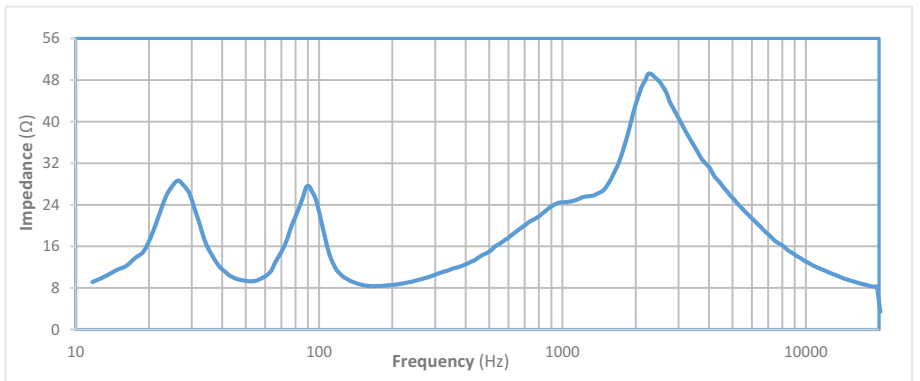
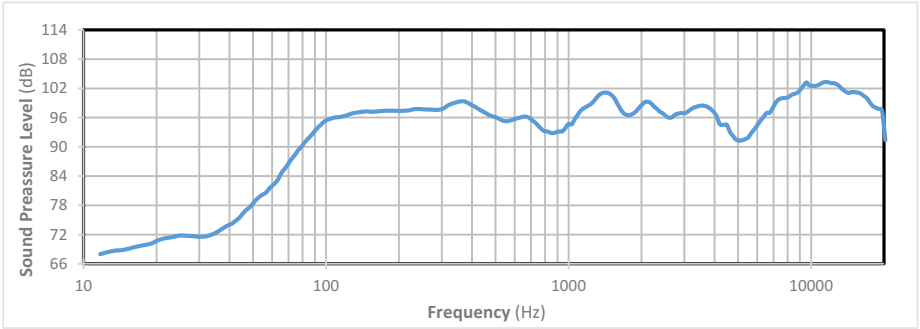
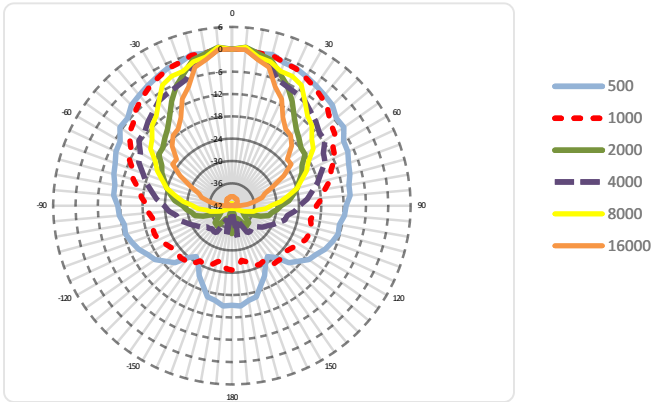
M15 CX cabinet is made in MDF wooden enclosure painted in black polymhere.
M15 CX incorporates a 15" coaxial woofer and 2.85" voice coil compression driver to offer a clear sound.
Its monitor shape, ensures a wide range of installation possibilities, including 35 mm insertion.

TECHNICAL PARAMETERS

| | |
|--------------------------------|---|
| Coaxial Transducer: | LF: 1x15" with 4" voice coil woofer; HF: 1x2.85" voice coil compression driver |
| Frec. Range: | 87 Hz – 20 kHz (±3 dB) 60 Hz – 23 kHz (-10 dB) |
| Sensitivity (1W/1m): | 98 dB SPL |
| Nominal impedance: | 8 Ω |
| Power Capacity: | 400 W AES* // 1600 W peak |
| Recommended power amplifier: | 800 W @ 8 Ohms |
| Max. SPL (dB@1m): | 124 dB // 130 dB peak |
| Connections: | 2 x SpeakOn |
| Nominal Beamwidth (500-4k Hz): | 60° ± 20° @-6 dB points |
| Material: | 15 mm Plywood |
| Finish: | Rough black matte painting |
| Dimensions: | 620 x 350 x 610 mm |
| Weight: | 20.5 kg (45.2 lbs.) |

*2 hours test AES 1984 rev. 2003





INSTRUCCIONES DE USO**ADVICES**

- Para proteger el dispositivo, no sobrecarge el baffle con mucha potencia durante un tiempo prolongado.
- Para reducir el riesgo de fuego, no exponga esta unidad a fuentes de calor.
- No coloque objetos pesados sobre el baffle
- No exponga la unidad a la lluvia o humedad
- Evite que se derramen líquidos en el interior
- Este unidad debe ser instalada por personal especializado

**M15 CX
MONITOR COAXIAL DE ESCENARIO****INTRODUCCIÓN**

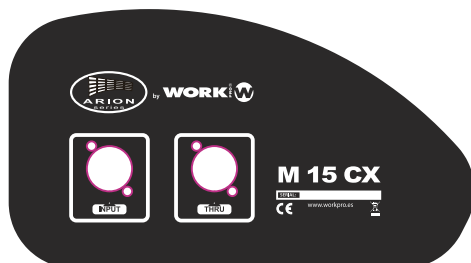
M15 CX dispone de un recinto acústico fabricado en madera MDF pintado en negro.

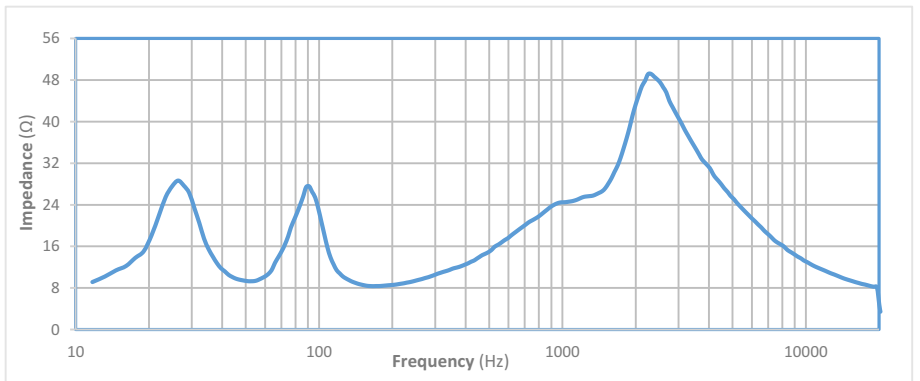
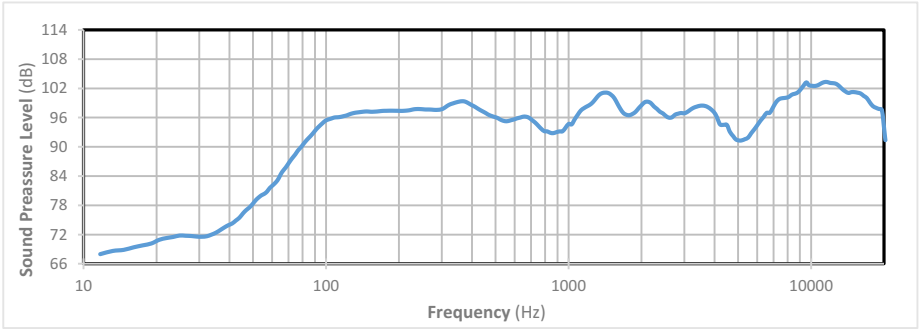
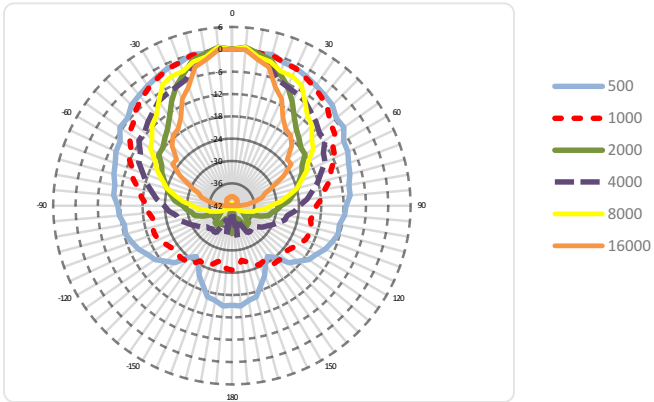
M15 CX incorpora un woofer coaxial de 15" y un motor de compresión con bobina de 2.85" para obtener un sonido nítido. Su forma de monitor, asegura un amplio rango de posibilidades de instalación, incluyendo vaso de inserción de 35 mm.

PARAMETROS TECNICOS

| | |
|-------------------------------------|--|
| Transductor coaxial: | LF: 1x15" woofer con bobina de 4" |
| Rango Frec.: | HF: 1x driver de compresión con bobina de 2.85" 87 Hz – 20 kHz (±3 dB) 60 Hz – 23 kHz (-10 dB) |
| Sensibilidad (1W/1m): | 98 dB SPL |
| Impedancia Nominal: | 8 Ω |
| Potencia soportada: | 400 W AES* // 1600 W peak |
| Max. SPL (dB@1m): | 124 dB // 130 dB peak |
| Conexiones: | 2 x SpeakOn |
| Ancho de banda nominal (500-4k Hz): | 60° ± 20° @-6 dB puntos |
| Material: | Madera de contrachapado de 15 mm |
| Acabado: | Pintura en negro |
| Dimensiones: | 620 x 350 x 610 mm |
| Peso: | 20.5 kg (45.2 lbs.) |

*2 horas test AES 1984 rev. 2003







Designed by EQUIPSON, S.A.

Avda. El Saler, 14 - Pol. Ind. L'Alteró, 46460 - Silla (Valencia) Spain

Tel. +34 96 121 63 01 Fax + 34 96 120 02 42

www.workproaudio.com support@workproaudio.com