

编号: Z-PKQG-3189-BLK-V8

材质: 80g书纸+ 双面印刷

尺寸: 折前51mm x 38mm 折后17 mm x19 mm

颜色: ----四色

Read me before using the HT3189!

User Guide Avantree HT3189

NO NEED to pair!

Units auto-reconnect each time they're turned on

(Response Time: 1 working day)

Any questions? Contact:

Support@avantree.com

Self-service Support:

- More FAQs on support.avantree.com
- 100+ Step by step video Guide – youtube.com/avantree/playlists

Telephone Support (Mon-Fri):

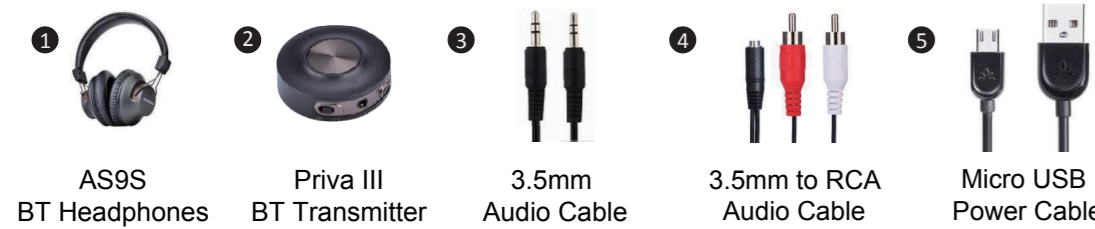
- USA / CANADA +1 800 232 2078 (EN, PST 9am-5pm)
- EU / Asia telephone No. refer to http://www.avantree.com/contact-us



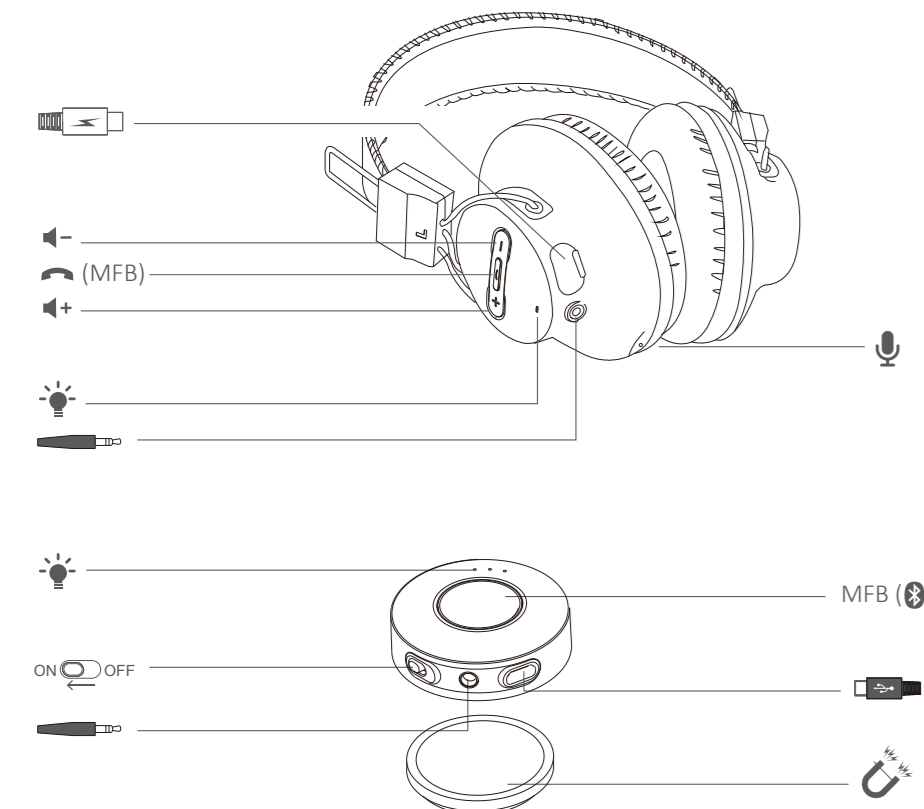
Dispose of the packaging and this product in accordance with the latest provisions.

Z-PKQG-3189-BLK-V8

What's in the box.



Product overview



EN How to use

1 Check your TV/Audio Source output options

Jack Options	AUX/3.5mm	RCA jacks labeled "AUDIO OUT"	Other RCA jacks (usually audio IN)	Optical OUT	Coaxial OUT	Big Phone Jack
Natively Supported?	✓	✓	✗	✗	✗	✗
Please refer to Point:	3.1	3.2	NA	3.3	3.3	3.4

Image 1

2 Turn on Transmitter and Headphones

2.1 Powering transmitter

Power the transmitter with the USB cable provided. Connect it to a TV USB port or any other USB charger that supports 5V/500mA-2A.

2.2 Turn on both devices

Turn on transmitter - slide on/off switch to "ON" position.
Turn on headphones - Press and hold "MFB" () for 3 seconds until you see first sight of BLUE light.
They will auto-reconnect, indicators are: 1) Headphones say "Welcome to Avantree, Connected". 2) LED on both transmitter and headphones turn BLUE.

3 Connect Transmitter to your TV/audio source

3.1 AUX/3.5mm Audio Out

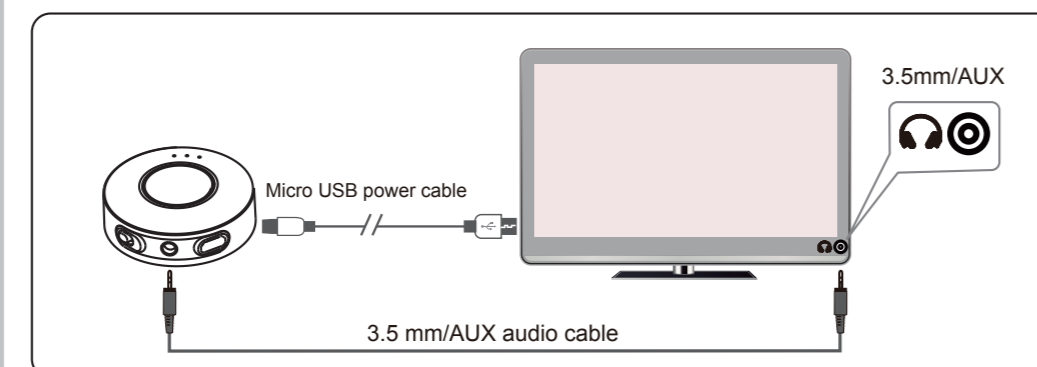
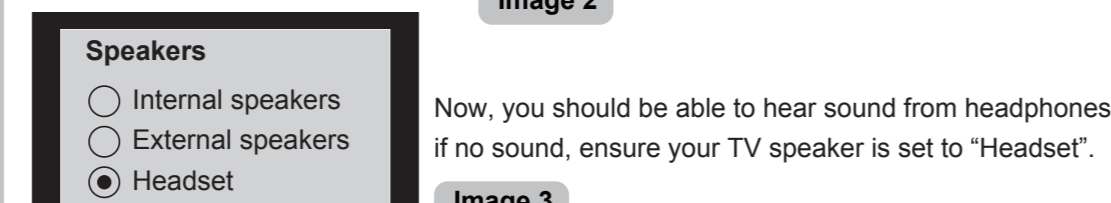


Image 2



Now, you should be able to hear sound from headphones, if no sound, ensure your TV speaker is set to "Headset".

3.2 RCA Audio Out (Red/White ports labeled "AUDIO OUT")

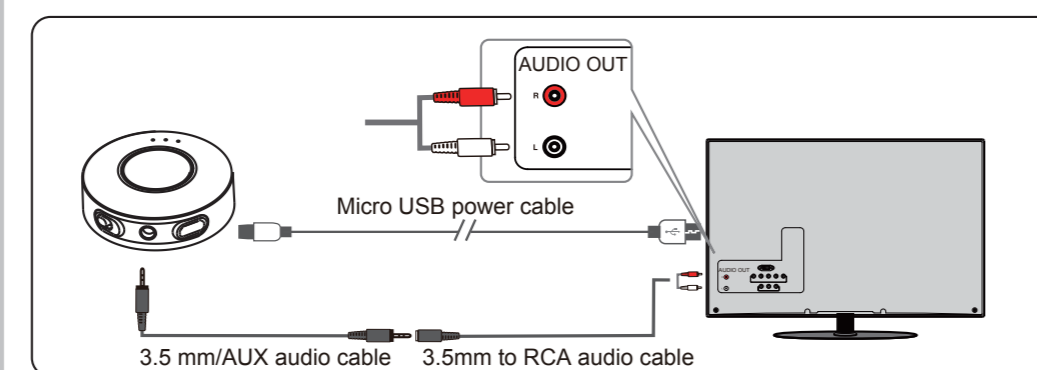
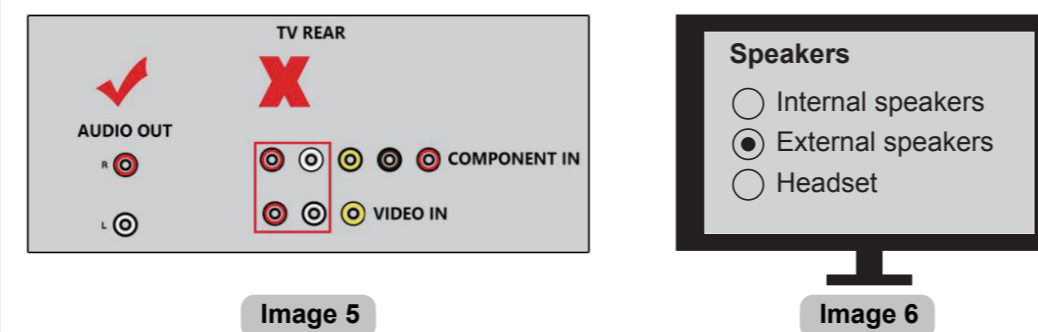


Image 4

3 Now, you should be able to hear sound from headphones, if no sound:

- Ensure use TV Red/White ports labeled "AUDIO OUT", other Red/White ports are incorrect.
- Ensure your TV Speaker is set to "External Speaker"



3.3 Optical/Coaxial Audio Out

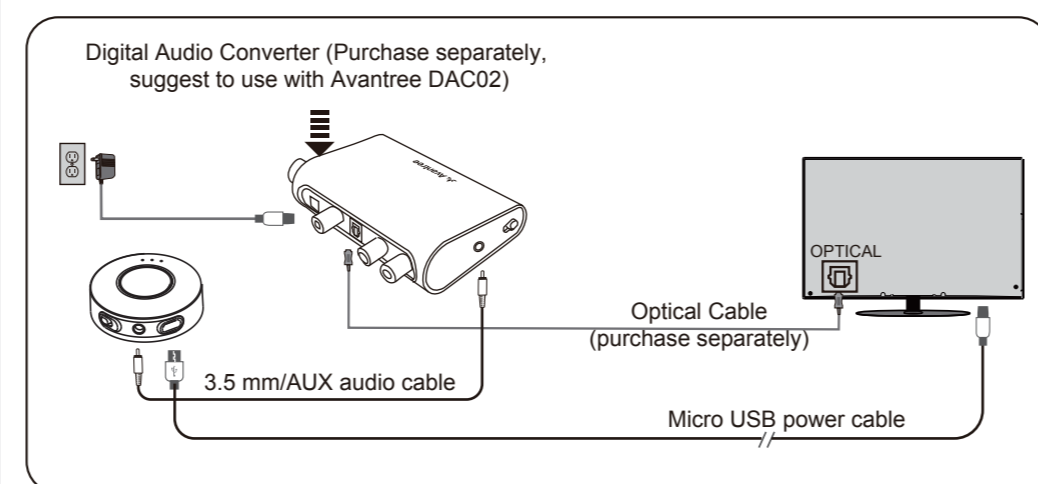
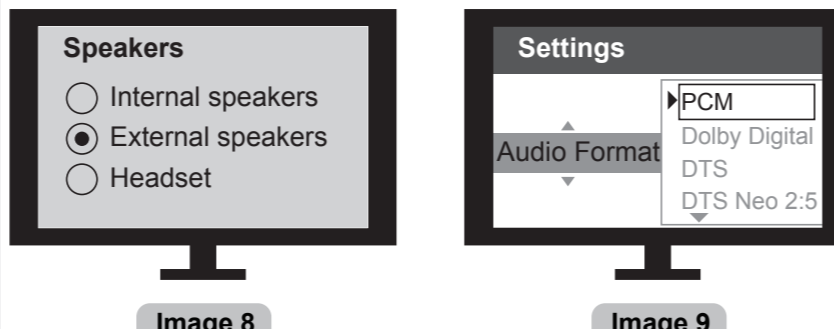


Image 7

Now, you should be able to hear sound from headphones, if no sound:

- Ensure your TV Speaker is set to "External Speaker"
- Ensure TV Audio Format is set to "PCM" (This is IMPORTANT)



3.4 Receiver with 6.35mm Phone Jack at Front

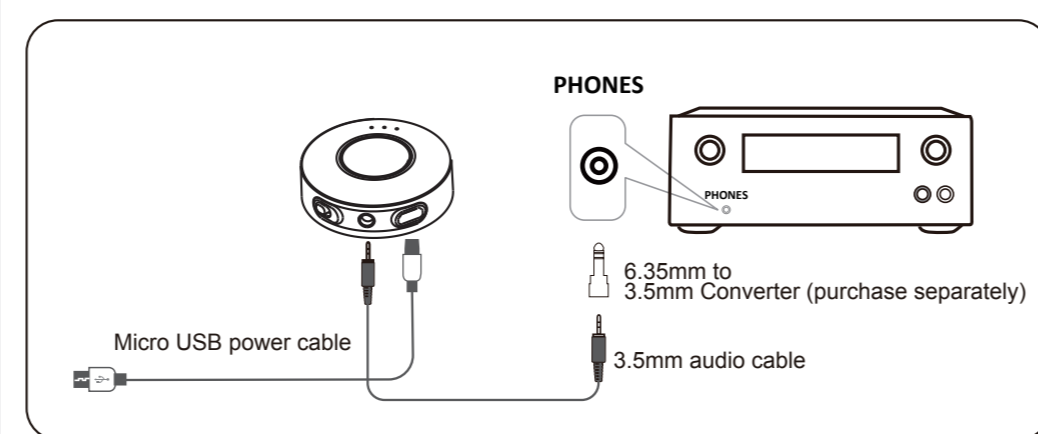


Image 10

EN Charging Headphones Tips

Please charge the headphones if you hear the "low battery" voice prompt. You can charge using a phone charger (5V/500mA-2A output), PC USB port, TV USB port or any other USB outlet using the included USB cable. It takes about 3.5 hours to fully charge the headphones. The LED will turn RED during charging and turn off once charging is complete.

Adding 2nd Headphones

- Turn on the HT3189 headphones and transmitter - they will connect automatically.
- Enter the transmitter into PAIRING MODE manually - Press and hold the MFB button for 5 seconds until the LED flashes RED and BLUE.
- Place your 2nd set of headphones into Bluetooth PAIRING MODE (please refer to your 2nd headphones' user manual).

Keep the devices close to each other and wait. Once connected, LED on transmitter and headphones will slow down at the same time.

Troubleshooting

1. No Sound.

- No valid audio signal into the transmitter
 - If connected using AUX/3.5mm audio out, change your TV audio out setting to "Headset", and can you hear any sound with the headphones plugged directly with audio cable into TV?
 - If connected using RCA ports, 1) Ensure use the RED/WHITE ports labeled "AUDIO OUT". Other RCA ports are usually AUDIO IN and incorrect. 2) Change your TV audio out setting to "External Speaker".
 - If connected using a DAC(Digital Analog Adapter), 1) Change your TV audio format to "PCM". 2) Change your TV audio out setting to "External Speaker".
- Transmitter and Headphones are not connected properly
 - Turn off and on both headphones and transmitter, they should auto connect to each other, once connected successfully, LED on both transmitter and headphones turn SOLID BLUE.

2. TV speaker is muted while using HT3189. This is a TV feature.

For many older models of TV, the internal TV speaker is muted when any of the audio output ports are connected (AUX, RCA, Optical, etc). For some TVs, e.g. LG, you can chose to play audio from the internal TV speakers and an external audio device simultaneously. Please try to change your TV settings or contact your TV manufacturer for more details. If your family prefer to listen to TV speaker while you use the Bluetooth headphone, then one workaround is to use an audio splitter with an external speaker. e.g. use a 3.5mm audio splitter (e.g. Avantree TR302) to share the TV audio with an EXTERNAL SPEAKER in addition to the HT3189.

3. Transmitter and headphones within HT3189 fail to reconnect

- Turn OFF both transmitter and headphones. Then turn them both back ON and wait 5-10 seconds for them to reconnect. If they don't connect please follow directions below.
 - Clear paired history of headphones: After turning on, press and hold both "+" and "-" for 10 seconds until the RED and BLUE LEDs are BOTH on for 2 seconds (looks PINK) - now all the paired history of the headphones is cleared. It then enters pairing mode automatically with the LED flashing alternately RED and BLUE.
 - Now, turn on the transmitter and wait for 5-10 seconds, they will auto-reconnect, LED on both transmitter and headphone turn SOLID BLUE.

More FAQs on support.avantree.com

LED indicators of Priva III

Status	LEDs indication
Power On/Off	BLUE / RED LED is on for 1 second
Pairing mode	RED and BLUE LED flash alternately
Reconnecting	BLUE LED flashes once every 2 seconds
Connected with AS9S	BLUE LED on

LED indicators & voice prompts of AS9S

Status	LEDs indication	Voice prompt
Power On	BLUE LED is on for 1 second	Welcome to Avantree
Power Off	RED LED is on for 2 seconds	Good bye
Pairing mode	RED and BLUE LED flashes alternately	Pairing
Connected with Priva III	BLUE LED on	Connected
Reconnecting	BLUE LED flashes once per 2 seconds	NA
Charging/charging complete	RED LED on/off	NA
Low battery	RED LED flashes	Low battery

DE Bedienung

1. Überprüfen Sie die Output-Optionen des TV Tonquelle, siehe "Image 1".

2. Transmitter und Kopfhörer einschalten

- Transmitter anschließen
 - Schließen Sie den Transmitter über das mitgelieferte USB-Kabel an. Verbinden Sie das Gerät mit dem TV-USB-Anschluss oder mit einer anderen USB-Lademöglichkeit, die 5V/500mA-2A unterstützt.
- Beide Geräte einschalten
 - Transmitter einschalten – schieben Sie den An-/ Ausschalter auf die "ON" Position.
 - Kopfhörer einschalten – Halten Sie „MFB“ () 3 Sekunden lang gedrückt, bis die BLAU LED-Leuchte an ist und Sie "Willkommen bei Avantree" hören. Warten Sie, bis Sie "verbunden" über die Kopfhörer hören, und die LED-Leuchten an beiden Geräten BLAU aufleuchten.

3. Transmitter mit Ihrem TV Tonquelle verbinden

- AUX / 3,5 mm Audio Out, siehe "Image 2"
 - Stellen Sie sicher, dass die TV-Lautsprecher auf « Kopfhörer » eingestellt sind, Siehe "Image 3"
- RCA Audio Out (rote/ weiße Anschlüsse "AUDIO OUT"), siehe "Image 4"
 - Stellen Sie sicher, dass die roten/ weißen TV-Anschlüsse mit "AUDIOOUT" gekennzeichnet sind, denn die anderen roten/ weißen Anschlüsse passen nicht. Siehe "Image 5"
 - Stellen Sie sicher, dass Ihr TV-Lautsprecher auf "externer Lautsprecher" eingestellt ist. Siehe "Image 6"
- Optisch/Coaxial Audio Out, siehe "Image 7"
 - Stellen Sie sicher, dass Ihr TV-Lautsprecher nicht auf "externer Lautsprecher" eingestellt ist. Siehe "Image 8"
 - Stellen Sie sicher, dass TV-Audioformat ist auf "PCM" eingestellt. Siehe "Image 9"
- Empfänger mit 6.35 mm Klinkebuchse an der Vorderseite, siehe "Image 10"

Laden von Kopfhörer-Ohrsteckern
Bitte laden Sie Ihre Kopfhörer, wenn Sie die Sprachansage "niedrige Batterie" hören. Sie können ein Handy-Ladegerät (5V/500mA-2A Output) verwenden, oder einen PC-USB-Anschluss, TV-USB-Anschluss oder einen anderen USB-Anschluss, indem Sie das mitgelieferte USB-Kabel verwenden. Es dauert ungefähr 3,5 Stunden, bis die Kopfhörer vollständig aufgeladen sind. Die LED-Anzeige leuchtet während des Ladevorgangs ROT auf, und geht aus, sobald der Ladevorgang beendet ist.

FR Utilisation

1. Vérifiez les options de sorties Audio/TV, se référer à Image 1

2. Mise en marche du transmetteur et du casque audio

- Mise en marche du transmetteur
 - Alimenter l'émetteur avec le câble USB fourni. Connectez-le à un port USB TV ou à tout autre chargeur USB prenant en charge 5V / 500mA-2A.
- Mise en marche des deux équipements
 - Allumer le transmetteur – mettre le bouton "ON/OFF" sur la position "ON".
 - Allumer le casque – Appuyer et maintenir le bouton "MFB" () jusqu'à voir la LED clignoter BLEU et entendre "Welcome to Avantree" dans le casque. Patientez jusqu'à entendre "Connecté" depuis le casque. Les LED respectives des deux équipements clignotent maintenant en BLEU.

3. Connecter le transmetteur sur votre source audio/TV

- Sortie audio AUX/3.5mm, se référer à Image 2.
 - AUCUN SON ? Vérifiez que votre TV est bien réglée en « sortie casque », se référer à Image 3.
- Sortie Audio RCA (connecteurs Rouge/Blanc "AUDIO OUT"), se référer à Image 4.
 - AUCUN SON ? Assurez-vous que les sorties TV Rouge/Blanc soit nommées "AUDIO OUT", les autres sorties similaires sont incorrectes. Se référer à Image 5.
 - Assurez-vous que votre TV soit bien réglée sur "Haut-parleurs externes". Se référer à Image 6.
- Sortie audio Optique/Coaxiale, se référer à Image 7.
 - AUCUN SON ? Assurez-vous que votre TV est bien réglée en "Haut-parleur externe". Se référer à Image 8.
 - Assurez-vous que le format numérique audio TV est réglé en "PCM". Se référer à Image 9
- Récepteur avec sortie jack 6.35mm en façade, se référer à Image 10.

Comment recharger votre casque audio ?

A l'aide du câble USB fourni Veuillez charger votre casque lorsque vous entendez l'invite vocale "Battery Low". Un chargeur de téléphone (sortie 5V / 500mA-2A), un port USB PC, TV ou tout autre port USB peut convenir. Comptez environ 3h30 pour recharger totalement le casque. La LED devient ROUGE pendant le chargement et s'éteint une fois la charge terminée.

IT Utilizzo

1. Controlla le opzioni output della tua fonte TV/Audio, vedi "Image 1".

2. Accensione della Trasmissione e delle Cuffie

- Accensione della trasmissione
 - Accendere la trasmittente attraverso il cavo USB fornito. Connetterla alla porta USB della TV o a qualunque altro caricatore USB che supporta 5V/500mA-2A.
- Accendere entrambi i dispositivi
 - Accendere la trasmittente – Portare il pulsante on/off sulla posizione "ON".
 - Accendere le cuffie – Tenere premuto il pulsante "MFB" () per 3 secondi, fino a quando non si accende il LED BLU e si sente il comando vocale "Benvenuti in Avantree". Attendere e le cuffie emetteranno il comando vocale "Connesso" e il LED su entrambi i dispositivi diventerà BLU.

3. Connessione della trasmissionte alla propria fonte TV/Audio

- Uscita audio AUX/3.5mm, vedi "Image2".
 - NESSUN SUONO? Assicurati che lo speaker della TV sia impostato su "Cuffie", vedi "Image3"
- Uscita Audio RCA (Porte rosse/bianche denominate "AUDIO OUT"), vedi "Image4"
 - Assicurati di utilizzare le porte della TV Rosse/Bianche denominate "AUDIO OUT", altre porte Rosse/Bianche non sono quelle corrette. Vedi "Image5"
 - Assicurati che lo speaker della tua TV sia impostato su "Cassa esterna". Vedi "Image6".
- Uscita audio Ottica/coassiale, vedi "Image7"
 - Assicurati di utilizzare le porte della TV Rosse/Bianche denominate "AUDIO OUT", altre porte Rosse/Bianche non sono quelle corrette. Vedi "Image8"
 - Assicurati che lo speaker della tua TV sia impostato su "Cassa esterna". Vedi "Image9".
- Ricevitore con jack delle cuffie da 6.35mm sulla parte frontale, vedi "Image10".

Suggerimenti per la ricarica delle cuffie
Quando le cuffie emettono il comando vocale "Batteria scarica" si prega di ricaricarle. È possibile utilizzare un caricatore per il telefono (output 5V/500mA-2A), porta USB PC, porta USB TV o qualunque altra presa USB utilizzando il cavo USB fornito. Occorrono circa 3,5 ore per ricaricare completamente le cuffie. Il LED si accenderà in ROSSO durante la ricarica, e si spegnerà una volta completata.

ES Instrucciones de uso

1. Compruebe las opciones de salida de su Tv y Fuentes de audio, ver "Image 1".

2. Encender Transmisor y Auriculares

- Encender el transmisor
 - Conecte el transmisor con el cable USB suministrado. Conectarlo a un puerto USB de la TV o cualquier otro cargador USB de 5V/500mA-2A.
- Encender ambos dispositivos
 - Encender transmisor – deslizar el interruptor on/off hacia la posición "ON".
 - Encender los auriculares - Mantener pulsado el botón "MFB" () durante 3 segundos hasta que el LED AZUL se encienda y escuchará "Bienvenido a Avantree". Espere y escuchará "Conectado" en los auriculares y el LED emitirá luz AZUL en ambos dispositivos.

3. Conectar el transmisor a su TV/ fuente de audio

- AUX/Salida de Audio de 3.5mm, ver "Image 2".
 - NO HAY SONIDO? Asegúrese de que el altavoz de su TV esté conectado a los "Auriculares", ver "Image 3".
- Salida de Audio RCA (Puertos Rojo/Bianco/etiquetados como "SALIDA DE AUDIO"), ver "Image 4".
 - NO HAY SONIDO? Asegúrese de que los puertos rojo y blanco de la TV lleven la etiqueta "SALIDA DE AUDIO", otros puertos rojos y blancos son incorrectos. Ver "Image 5".
 - Asegúrese de que el altavoz de su TV esté configurado como "Altavoz externo". Ver "Image 6".
- Salida óptica/Coaxial de Audio, ver "Image 7".
 - NO HAY SONIDO? Asegúrese de que el altavoz de su TV esté configurado como "altavoz Externo". Ver "Image 8".
 - Asegúrese de que el formato de audio de su TV esté configurado como "PCM". Ver "Image 9".
- Receptor para teléfono con clavija Jack de 6.35mm en la parte frontal, ver "Image 10"

Consejos para recargar los auriculares

Por favor recargue los auriculares si escucha la voz de "batería baja". Puede utilizar un cargador de teléfono (salida 5V/500mA-2A), el puerto USB del PC, de la TV o cualquier puerto USB, incluido el del cable. Toma de corriente con el cable USB incluido. Tarda unas 3,5 horas en cargar completamente los auriculares. El LED se pondrá en ROJO durante la carga y se apagará una vez que la carga esté completa.

正面

反面